



jordan fishwick

Lower Hague New Mills High Peak



Lower Hague New Mills High Peak SK22 3AP

£325,000



The Property

*** A REAL GEM *** Overlooking open farmland to the rear with incredible views towards up the valley and to the hills beyond, a bay-fronted, two double bedroom detached bungalow. Offering fantastic potential for updating or redevelopment (subject to planning) and conveniently located in Hague Bar. For sale with NO CHAIN and comprising: Entrance hall, living room, sitting/dining room, kitchen, two bedrooms, spacious bathroom and boiler/utility room. Gas central heating, double glazing, lawn side gardens and ample driveway parking. VIEWING ADVISED




- In Need Of Modernisation
- Detached True Bungalow
- Stunning Views
- Overlooking Farmland
- Two Bedrooms
- Living Room and Sitting/Dining Room
- Potential to Extend (subject to planning permission)
- Gated Driveway Parking and Lawn Gardens
- No Chain

Postcode SK22 3AP

EPC Rating

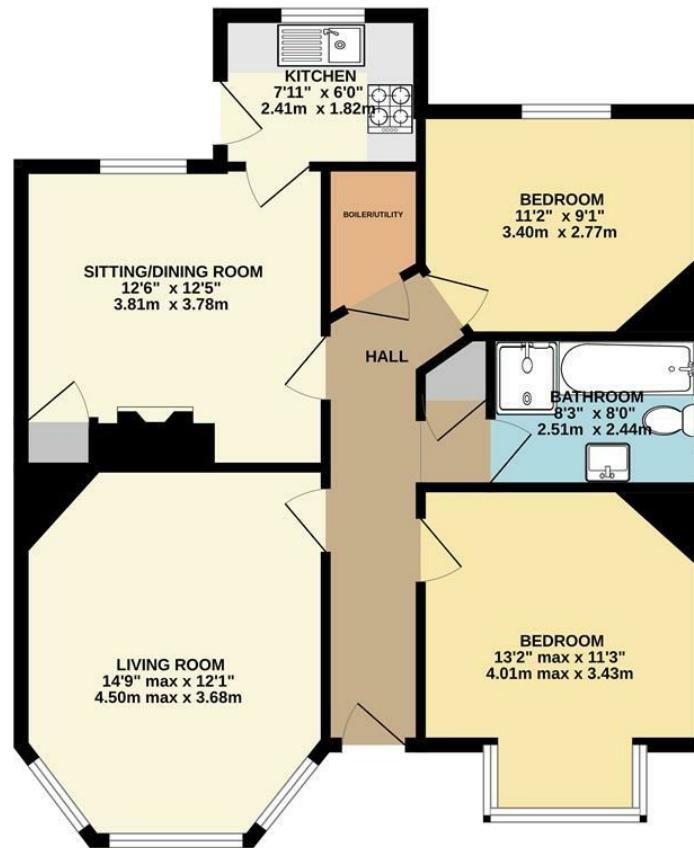
Local Authority High Peak

Council Tax C

Energy Efficiency Rating		
	Current	Potential
Very energy efficient - lower running costs		
(92 plus) A		
(81-91) B		
(69-80) C		
(55-68) D		
(39-54) E		
(21-38) F		
(1-20) G		
Not energy efficient - higher running costs		
England & Wales	EU Directive 2002/91/EC 	



GROUND FLOOR



Whilst every attempt has been made to ensure the accuracy of the floorplan contained here, measurements of doors, windows, rooms and any other items are approximate and no responsibility is taken for any error, omission or mis-statement. This plan is for illustrative purposes only and should be used as such by any prospective purchaser. The services, systems and appliances shown have not been tested and no guarantee as to their operability or efficiency can be given.
Made with Metropix ©2025



These particulars are believed to be accurate but they are not guaranteed and do not form a contract. Neither Jordan Fishwick nor the vendor or lessor accept any responsibility in respect of these particulars, which are not intended to be statements or representations of fact and any intending purchaser or lessee must satisfy himself by inspection or otherwise as to the correctness of each of the statements contained in these particulars. Any floorplans on this brochure are for illustrative purposes only and are not necessarily to scale.

Offices at: Chorlton, Didsbury, Disley, Hale, Glossop, Macclesfield, Manchester Deansgate, Manchester Whitworth Street, New Mills, Sale, Wilmslow and Withington

14 Market Street, Disley, Cheshire, SK12 2AA

01663 76 78 78

disley@jordanfishwick.co.uk

www.jordanfishwick.co.uk